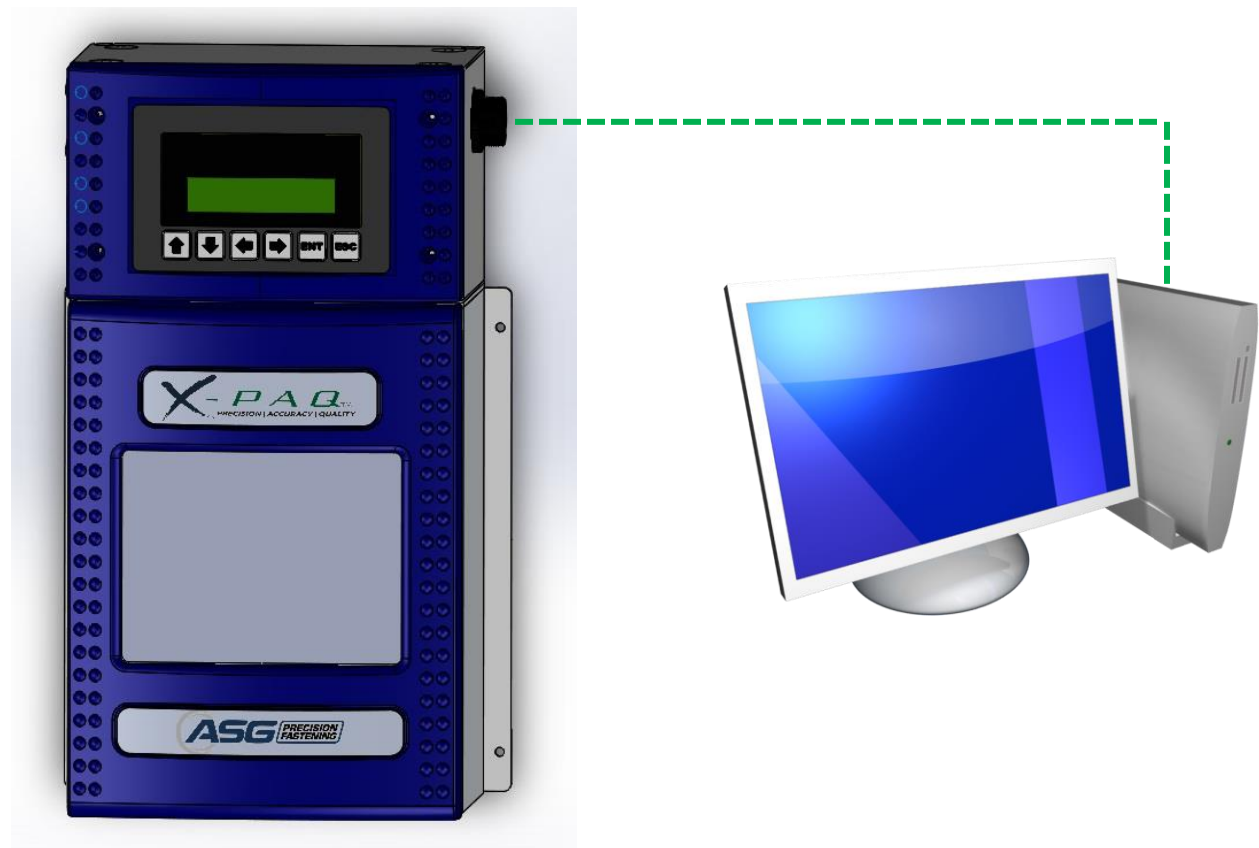


ASG-NW2500 Network Module

ACOP Manager Application

Installation & User Guide



Software Version 1.0.3

Manual Version 1.0.0

June, 2017



ASG, Division of Jergens, Inc.

15700 S. Waterloo Road | Cleveland, OH 44110-3898 | Phone: (888) 486-6163 | Fax: (216) 481-4519 | Email: asginfo@asg-jergens.com | Web: www.asg-jergens.com

ASG Precision Fastening
ASG-NW2500 ACOP Manager Application Installation & User Guide
Manual Version 1.0.0
Release: June, 2017

Software Version 1.0.3

To download the latest version of this manual visit:

www.asg-jergens.com

ASG Precision Fastening

(888) 486-6163

15700 S. Waterloo Rd.

Cleveland, OH 44110

USA

© 2017 Jergens Inc.

All Rights Reserved

ASG-NW2500 ACOP Manager Application

Introduction

The ASG-NW2500 ACOP Manager Application allows a user to connect with the ASG-NW2500 network module to perform some basic setup and programming of the network module itself, as well as retrieve stored data held within the module.

Note: The ACOP Manager Application cannot change any settings of the ASG-CT2500 X-PAQ™ controller, refer to the ASG-CT2500 User Guide for more information on X-PAQ™ functionality.

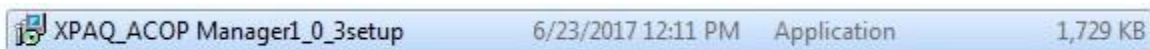
Application Installation

System Requirements

- Windows 7 or later
- 4.0 Mb of available disk space minimum.

Installation

Download the installation setup file from the ASG-NW2500 product page of the ASG website



Double-click to begin.

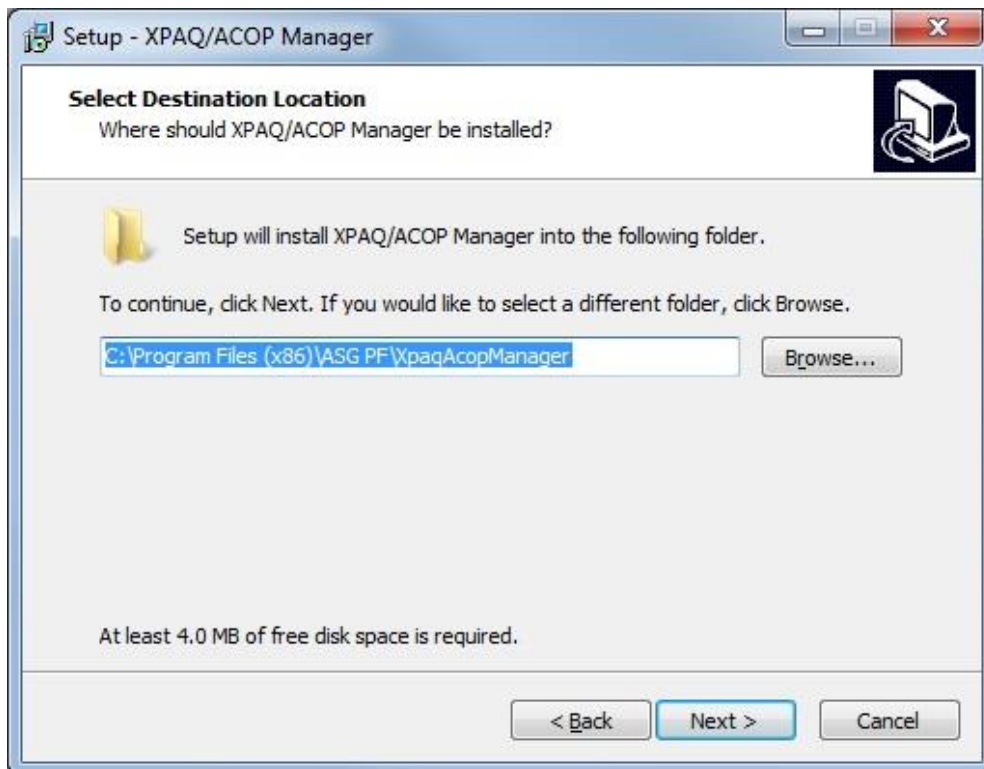
You may receive one or more security warnings, click “Run” and/or “Yes” to proceed with the installation setup.



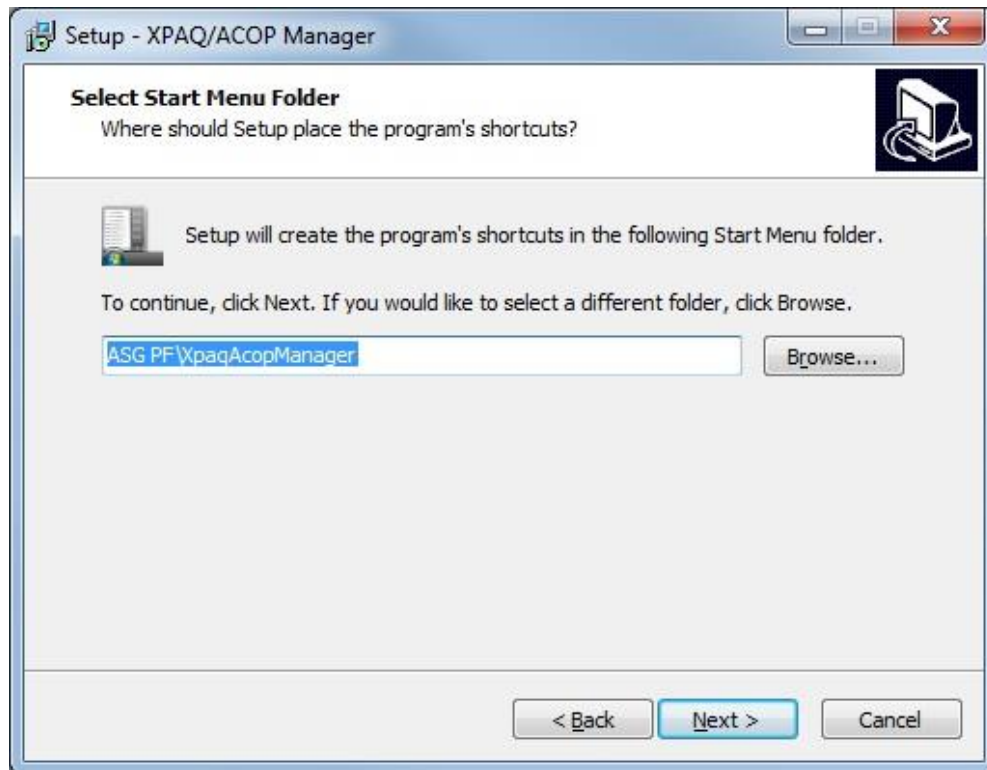
Click “Next >” to begin.



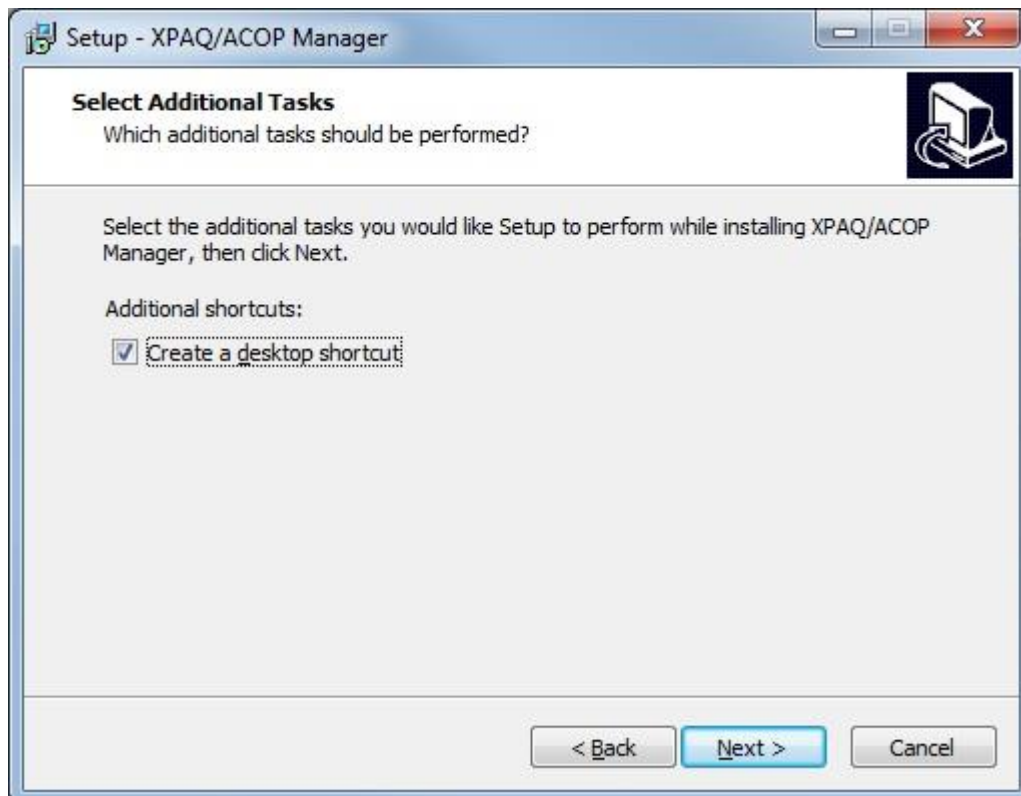
You may alter the installation path if you wish. Click “Next >” to proceed



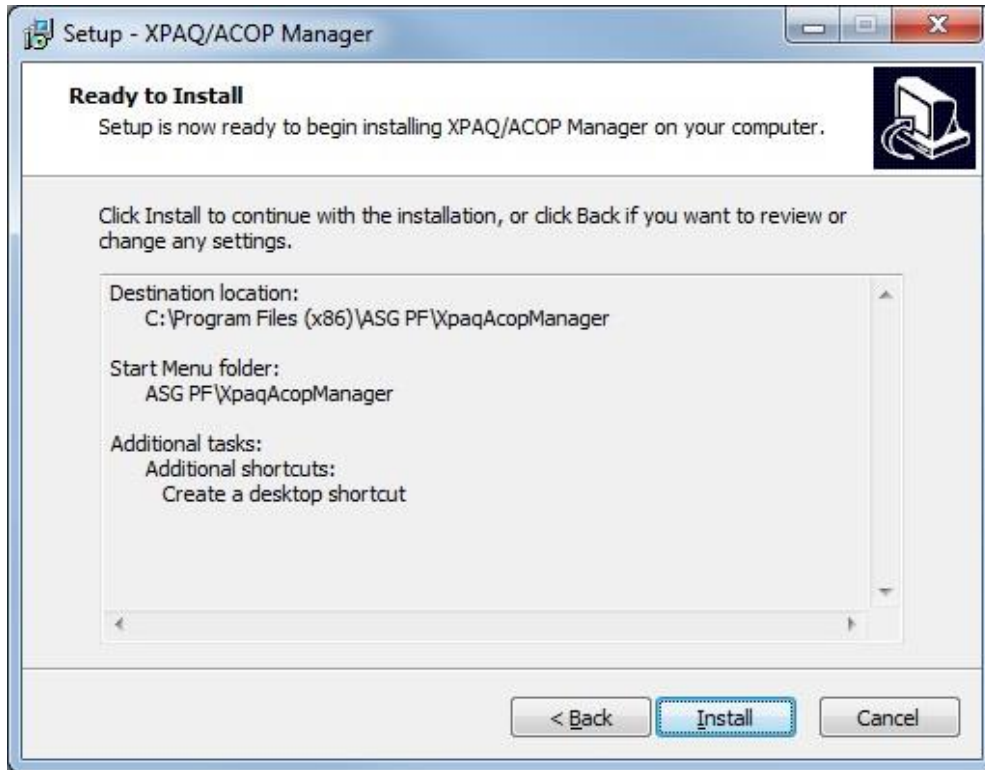
You may also alter the Start Menu path if you wish. Click “Next >” to proceed.



There is also an option to create a desktop shortcut. Click “Next >” to proceed.



Review the selections then click “Install” to proceed.



The installer will proceed with the installation and give you the option to launch the program.

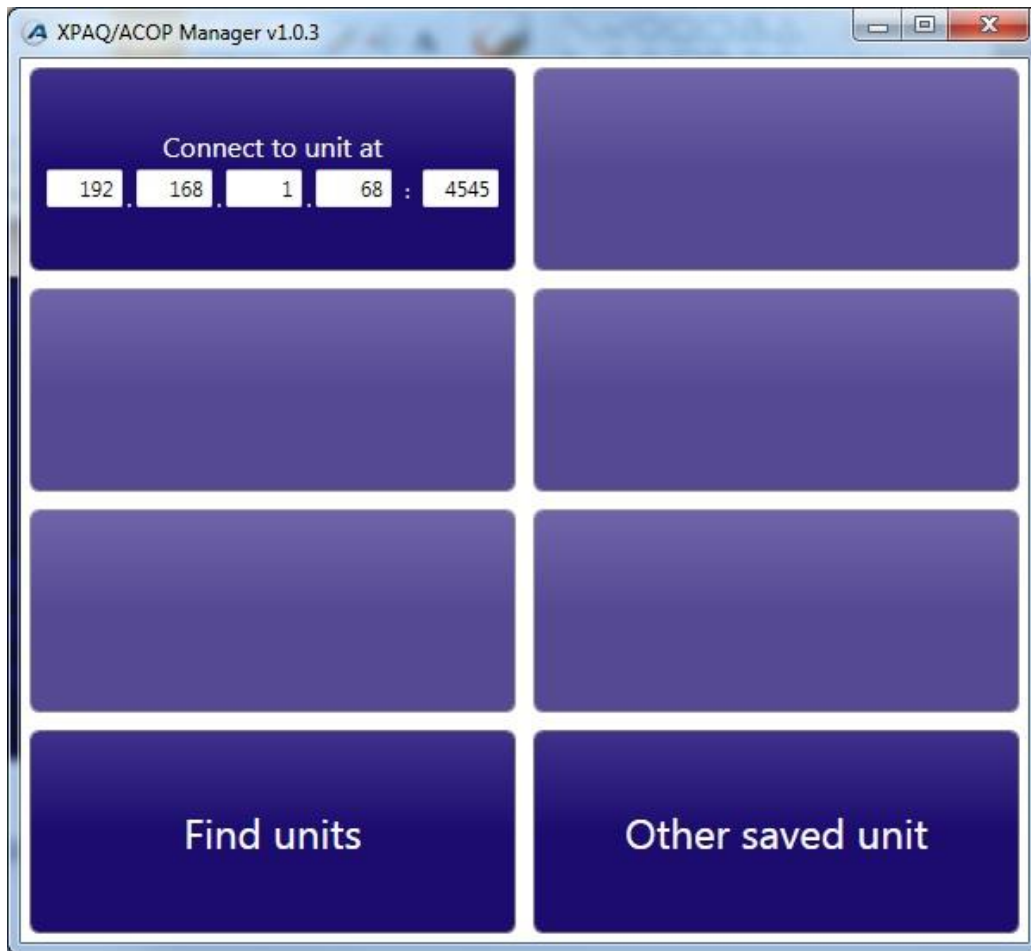


Application Operation

Locate the desktop shortcut icon or start menu entry and open.

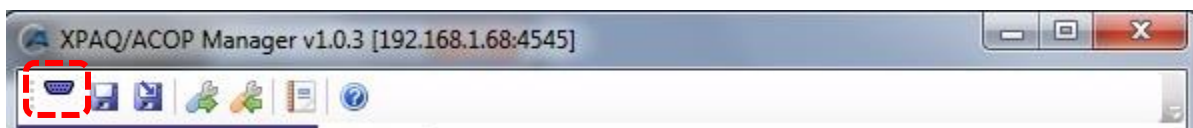


The connection dashboard will allow you to connect to a specific unit by identifying it by its IP Address and Connection Port, or to explore the connected network to Find Units.



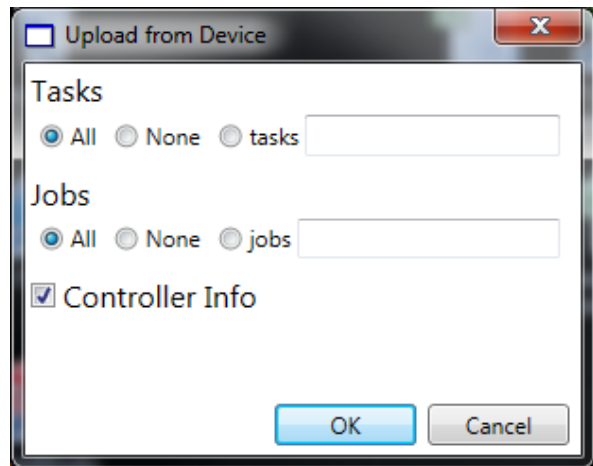
Click on the appropriate section to select that option.

You can always return to the connection dashboard at a later time by clicking the Dashboard icon at the top of the application.



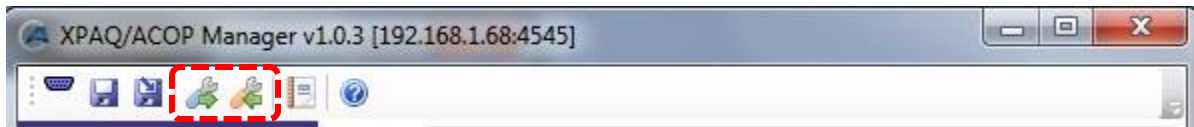
The software will give you options for what specifically to upload from the ASG-NW2500 to the PC window.

Click “OK” to begin.



Once the settings have been uploaded to the PC, changes may be made to basic module “Controller Info”, “Tasks”, and “Jobs”. Data retrieval and live viewing is also possible.

At any time, module settings can be uploaded or downloaded between the PC and ASG-NW2500 by using the upload/download icons at the top of the window.

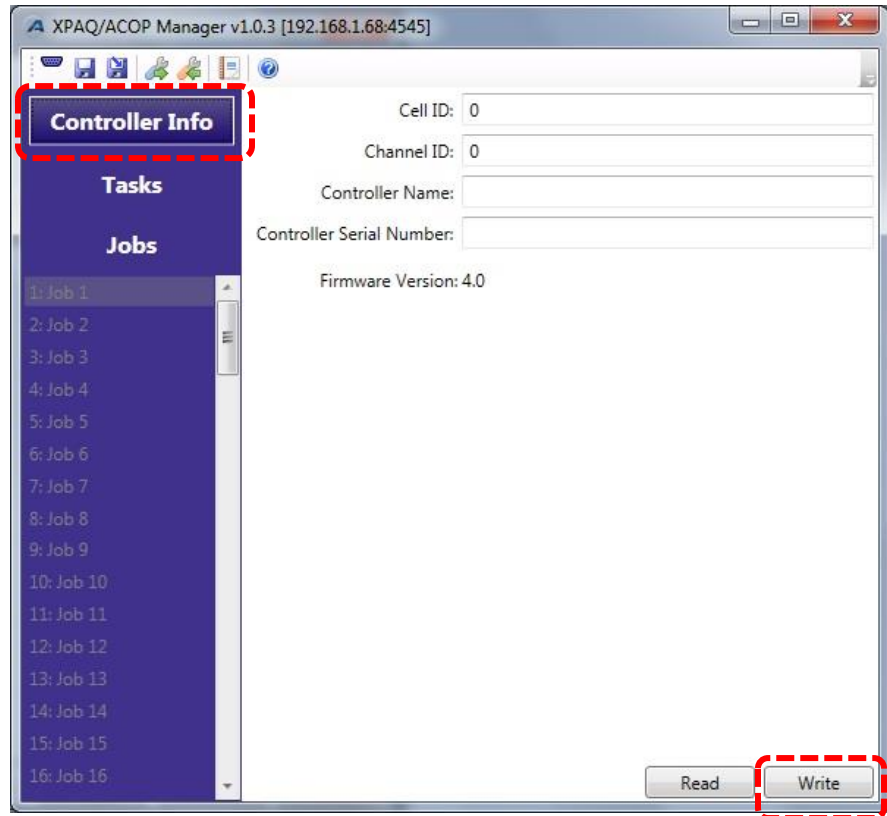


Controller Info Tab

Select the “Controller Info” button on the left side of the window.

Default information is shown to the right.

Edit the information as desired and click “Write” to update the information to the ASG-NW2500. Any changes in the PC window will not update to the ASG-NW2500 until this has been done.



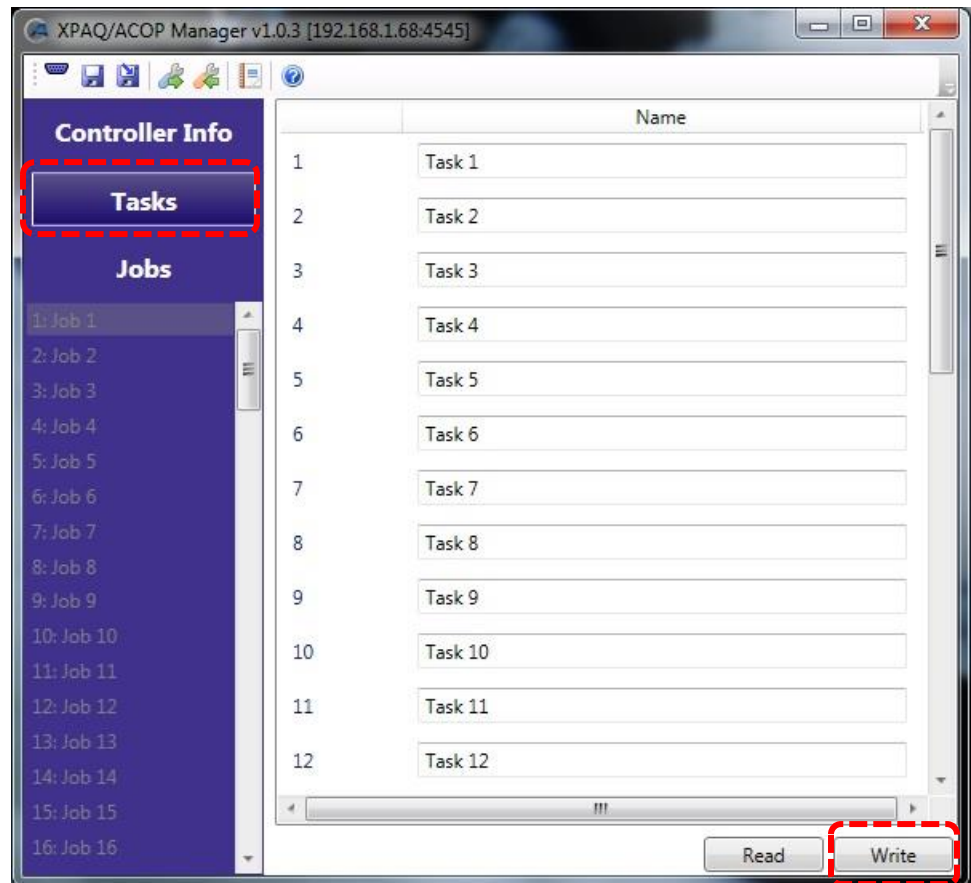
Note: Controller Name and Controller Serial Number fields are not related to the values inside the ASG-CT2500 X-PAQ™ controller.

Tasks Tab

Select the “Tasks” button on the left side of the window.

Default information is shown to the right.

Edit the task names as desired and click “Write” to update the information to the ASG-NW2500. Any changes in the PC window will not update to the ASG-NW2500 until this has been done.



Note: The task name fields are not related to the values inside the ASG-CT2500 X-PAQ™ controller.

Jobs Tab


A Job in the ASG-NW2500 is a pre-defined sequence of Tasks performed. Upon selection of a Job, the ASG-NW2500 will send input signals to the X-PAQ™ controller to select the first step of the Job. After the first step of the Job (X-PAQ™ task) is complete, the ASG-NW2500 will send the next set of input signals to the X-PAQ™ to select the next task in the Job.

Upon completion of a Job, the ASG-NW2500 will either leave the X-PAQ™ on the last task of the previous Job, or repeat the Job by selecting the first task over again. This will depend on the selection made when defining the Job below.

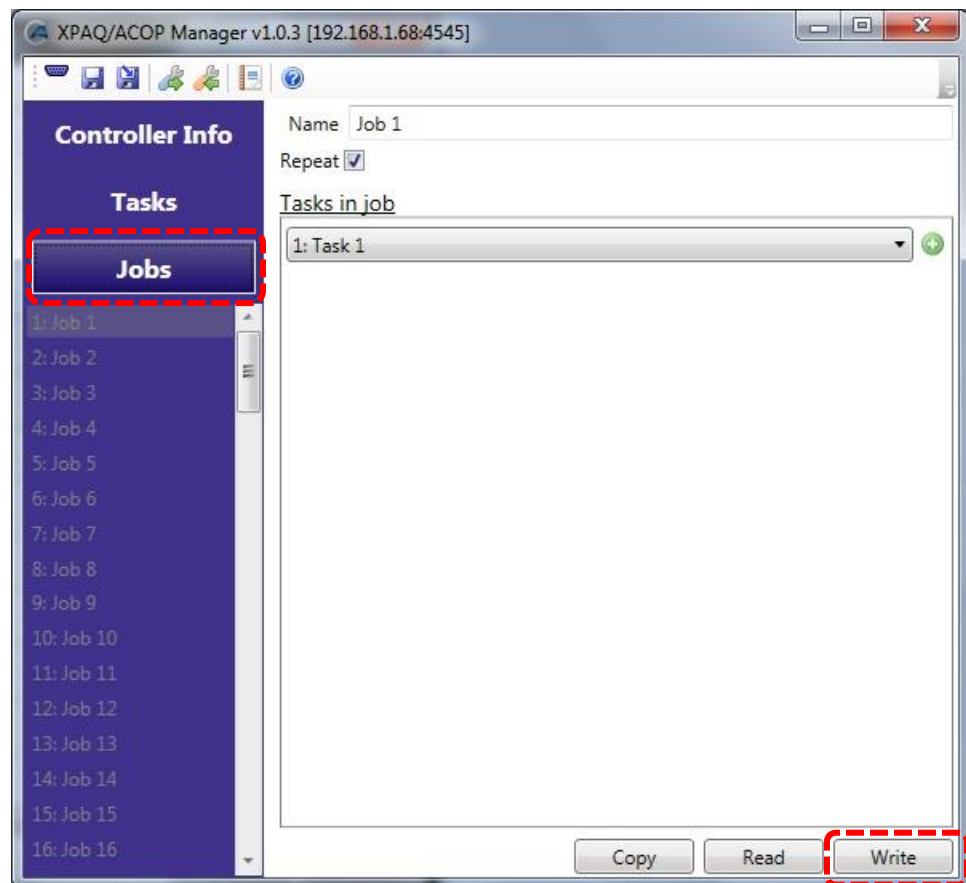
Note: Task selection through input signals to the X-PAQ™ requires coordinating input programming be performed in the ASG-CT2500 controller. Reference the ASG-CT2500 and ASG-NW2500 User Manuals for more information.



Select the “Jobs” button on the left side of the window.

Default information is shown to the right.

To add a Job, select the first Task to be performed in the X-PAQ™ from the drop-down and click the  button.

Continue until all the necessary Tasks have been added to the Job.

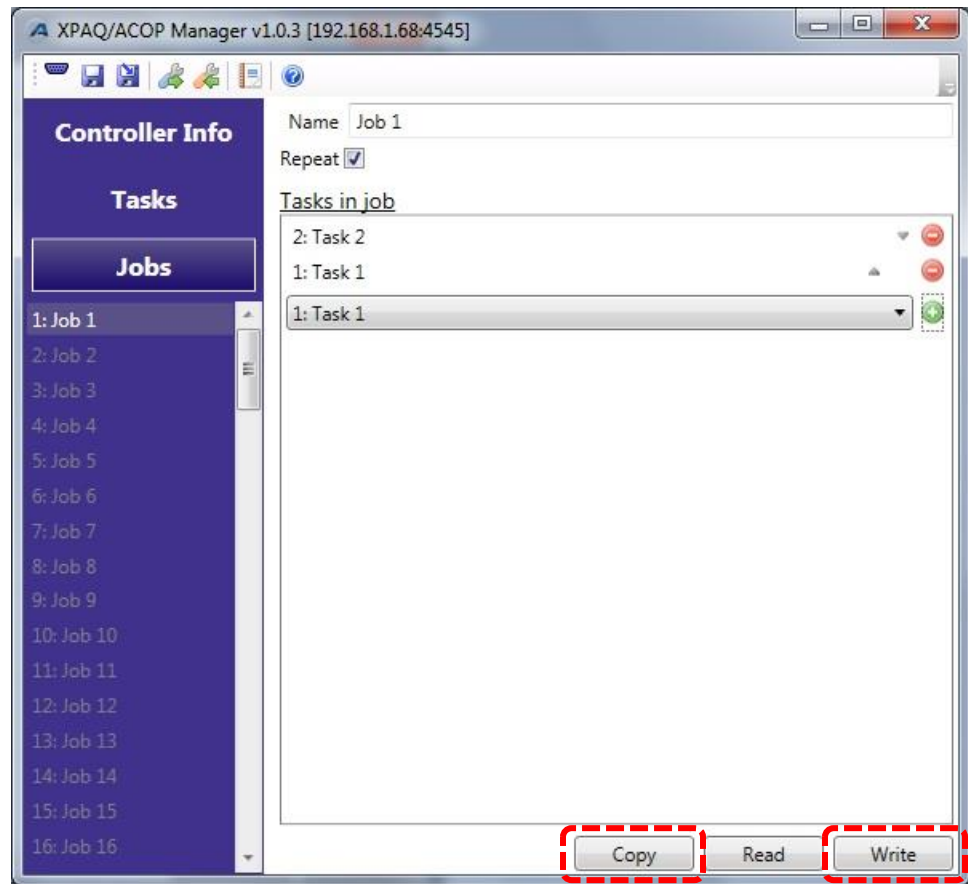


Note: A Task name shown drop-down list is not officially part of the Job until the  button has been pressed and the  remove button is present next to it.

Click “Write” to update the information to the ASG-NW2500. Any changes in the PC window will not update to the ASG-NW2500 until this has been done.

An example Job setup is shown below:

This Job will perform X-PAQ™ Task #2, then Task #1 and repeat until another Job is called.

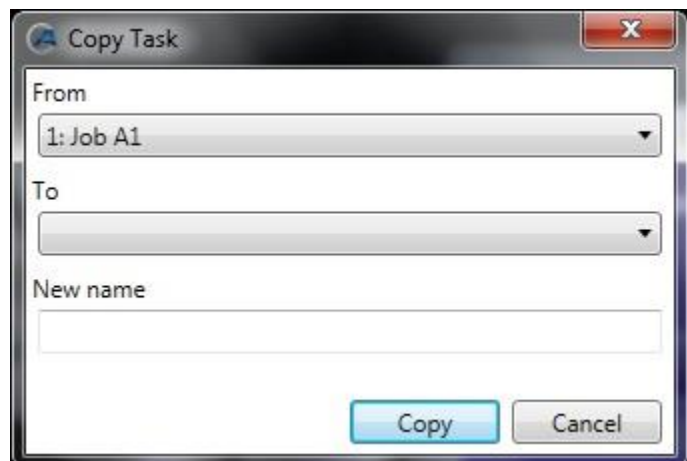


Steps of a Job may be re-sequenced by using the ▼ and ▲ buttons next to each step, or removed entirely by clicking the ⓧ button.

Be sure to click “Write” to update the information to the ASG-NW2500. Any changes in the PC window will not update to the ASG-NW2500 until this has been done.

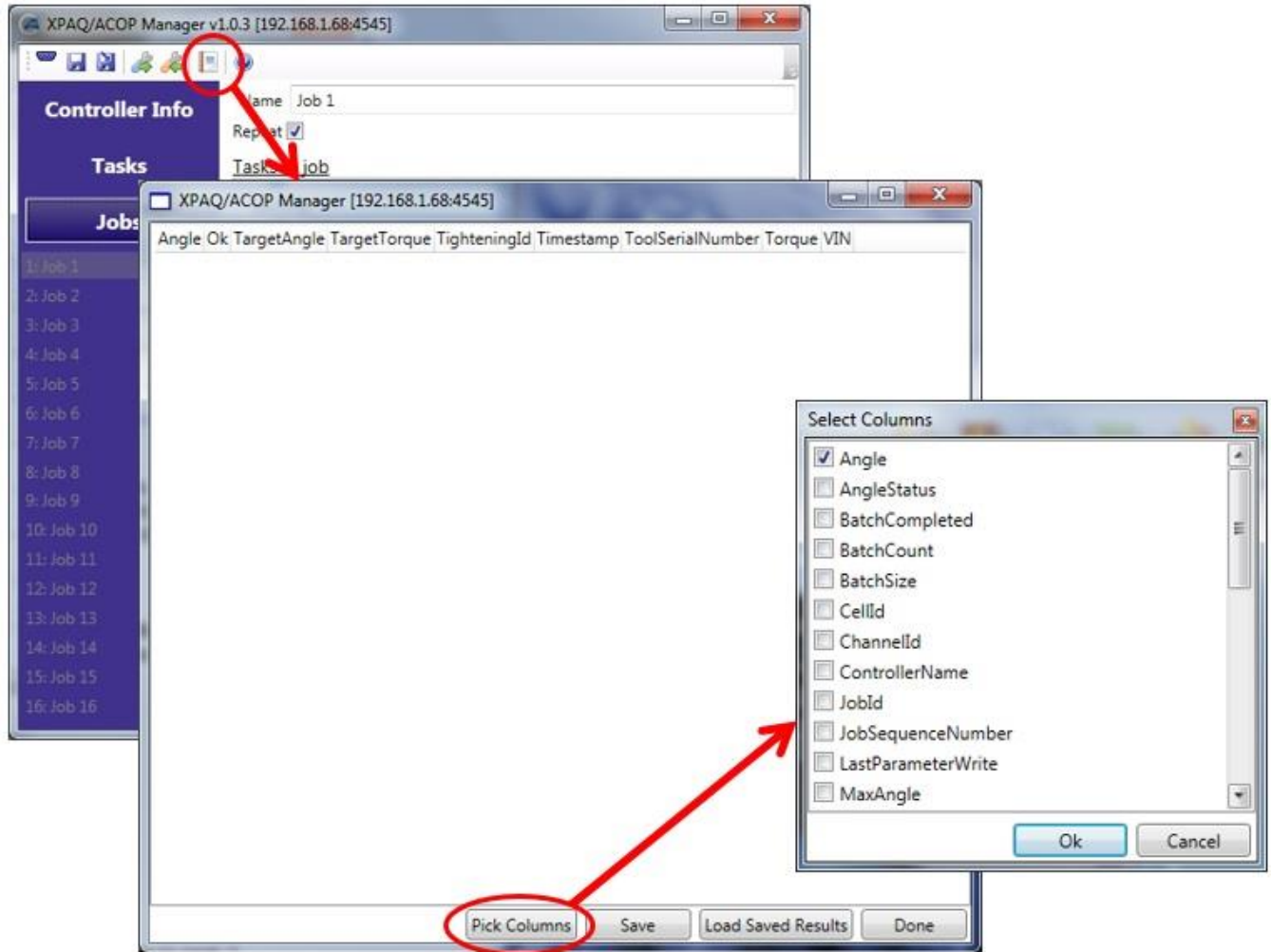
To copy existing Jobs to another Job slot for modification, use the “Copy” button. An additional dialog box will appear to assist you.

Make the desired changes and click “Copy” to finish.



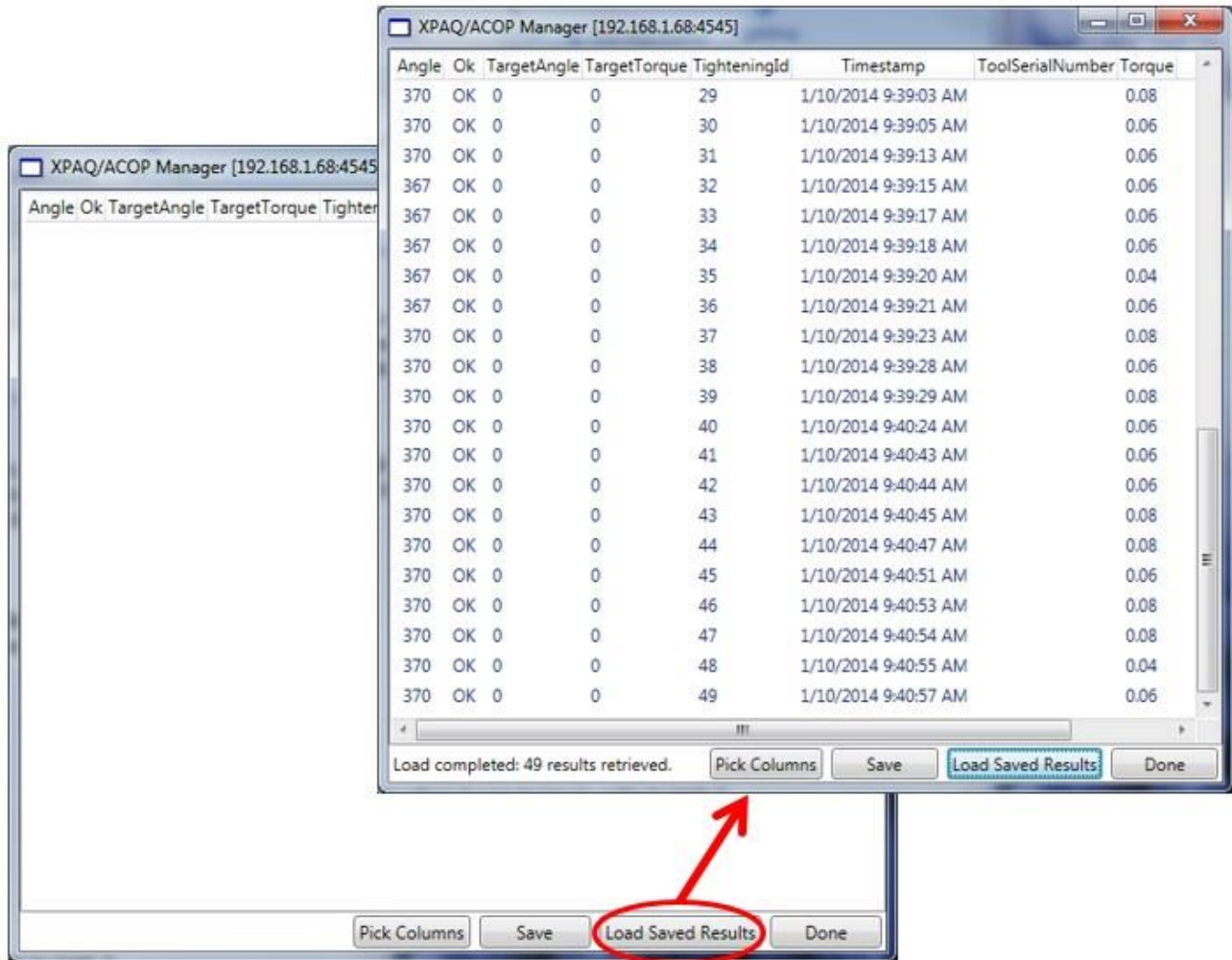
Result Logging Window

To view live or saved torque data results from the ASG-NW2500, select the “Result Log” button at the top of the window.



Select the columns of data you wish to review by selecting the “Pick Columns” button. Select the columns you wish to view from the list and click “OK”. The columns may be re-ordered in the view window by clicking the headers and dragging them left or right.

To load saved results from the ASG-NW2500 module, select the “Load Saved Results” button, and the data will auto-populate the table.



Any results viewed in the log table can be saved off to the local PC in .CSV format by clicking the “Save” button in the table window next to the “Pick Columns” button.

Saving Connections to the Dashboard Window

Connections may be saved by using the “Save” or “Save As” buttons on the top of the window and the saved connection will then appear on the main dashboard window.

